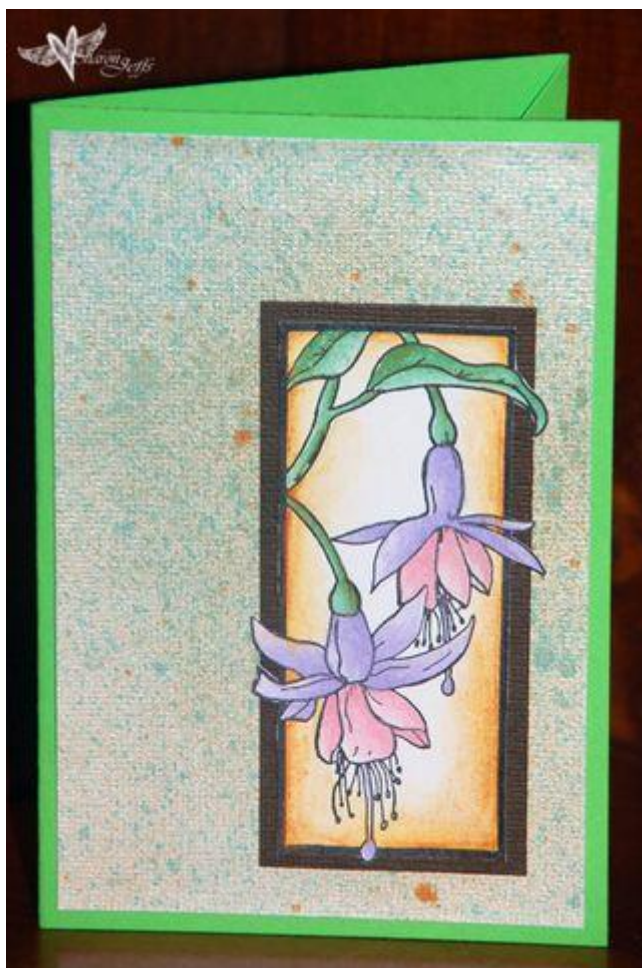


Fuschia Card



Required

Fuschia Stamp (available from Kaszazz along with everything else listed here)

Bling card – Green (12 inches by 6 inches)

- White (4 inches by 6 inches)

Basic card – Chocolate (5 inches by 3 inches)

- white (5 inches by 3 inches)

Black Stazon ink pad

Smooch – Green Apple; Grape Soda; Taffy; Pumpkin

Aquabrush

Smooch Spritz – Green and gold to match your colour card

Instructions

- Fold green bling card at the 4 inch mark and the 8 inch mark to create a tri-fold card. Trim wedge from inside edge and adhere 2 of the sides to create a pocket.
- Trim white bling card to fit the front of the green card. Spritz this with a green coloured smooch spray of your preference and let dry.
- Re-spritz the which card with the gold smooch spray and again put aside to dry.

- Stamp the fuschia image onto the white card using the Stazon ink pad.
- Apply a small amount of one of the smooch inks to a plastic surface (I usually use one of my clear stamp blocks). Brush a section of the stamped image with the aquabrush to dampen the card and make blending easier. Dab the aquabrush into the smooch and use to colour the image. I found that if I placed my brush down first in the area I wanted the most colour and then blended out, I could shade more effectively.
- Continue until the image is coloured. Once dry, cut out and mat with the chocolate card. Attach to lower right of card.