

Embossed Acetate Card



Materials

A4 White Card

Acetate/ clear plastic sheet

Tim Holtz Rubber Stamp – Garment District

Tim Holtz Distress Inkpad – Fired Brick, Weathered Wood, Tattered Rose

Cuttlebug Embossing Folder – Stylised Flowers

Tim Holtz Blending tool

Autumn Leaves Acrylic stamp set – Swirls V2

Kaisercraft Acrylic stamp set – Flora

Smooch Spritz – Cherry Ice, Electric Blue, Gold Glow

Ranger Distress Crackle paint – Rock Candy

Stazon Jet Black inkpad

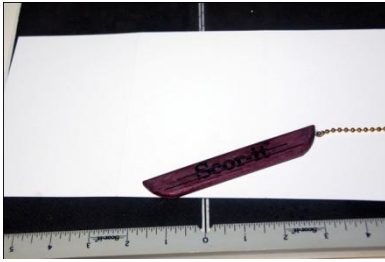
Ranger Glossy Accents

Ranger Ice Stickles – Crystal Ice

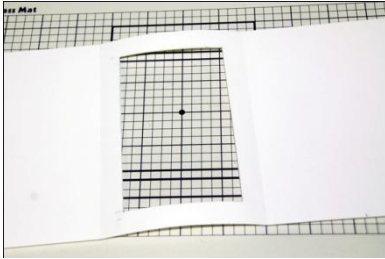
Instructions

Trim A4 paper to 6 inches by 11 7/8 inches.

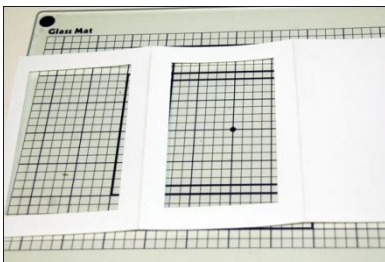
Place your card in a landscape orientation and score at the 4 inch and 8 inch mark. Fold in so that the smaller width section sits inside the card.



Mark out window on the centre panel that measures $\frac{1}{2}$ an inch in from the top, bottom and both scored folds. Use a sharp blade, cut this section out.



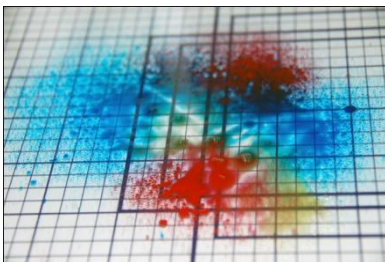
Fold card in so that the smaller section is butted up against the window piece and trace the window. Cut out this section as well and set aside.



Using the butterfly stamp and the stazon pad, stamp the butterfly onto a scrap of acetate.



Shake each of the Smooch spritz's well and spray a glass surface randomly.



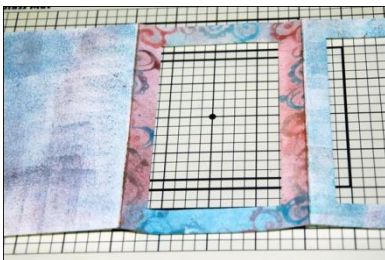
Stamp the butterfly stamp into the spray and stamp down onto a piece of white card. Cut both butterfly images out.



Fold up the acetate butterflies wings slightly and then adhere to the card butterfly using a small amount of glossy accents along only the body section. Add dabs of Ice Stickles across the acetate wings and set aside to dry thoroughly.



Spritz a small amount of water across the remaining smooch ink still on the glass and stamp down into it with one of the flourish stamps. Stamp randomly around the edges of the centre section of the card. Using the blending tool, add in extra colour by dabbing and blending any remaining ink onto the surface of the card. Finally, add a layer of the Distress Rock Candy over the surface of the centre section and put aside to dry thoroughly.



Cut out a piece of acetate that measures 2 ½ inches by 5 ½ inches. Place it centrally within the cuttlebug embossing folder and run it through the cuttlebug or alternate embossing machine.



Once dry adhere embossed acetate panel between two window sections and glue together to form a single layer front of your card.



Attach butterfly to the front corner of your card.



Using the blending tool, blend Distress ink across the inside of the card. Stamp sentiment inside the card so that it peers through the acetate window.

