

Reverse Soot Stamped Card



Required

Tim Holtz Stamp Set – Pattern Pieces, Captured Moments

White Glossy Cardstock

CoreDinations Cardstock – Burnt Sugar, Mantis

Tim Holtz Idea-ology Mini Paperclips

May Arts Ribbon – Burgundy Stripe

Versamark Stamp pad

Dew Drop Brilliance inkpad – Coffee Bean

Candle

Matches

Tissue or cotton balls

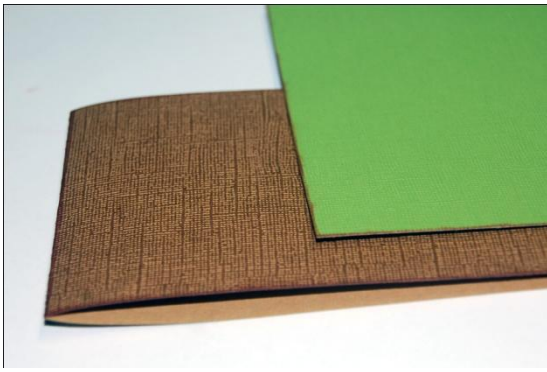
Matt Surface Sealer

Instructions

Cut brown card to 12 inches by 4 inches and the green card to 3 $\frac{3}{4}$ inches by 5 $\frac{3}{4}$ inches. Cut an addition smaller brown mat measuring 2 $\frac{3}{4}$ by 3 $\frac{1}{2}$ inches.

Cut a white square 3 $\frac{1}{4}$ inches by 2 $\frac{1}{2}$ inches and another that measures 1 $\frac{1}{2}$ inches by 3 $\frac{1}{4}$ inches.

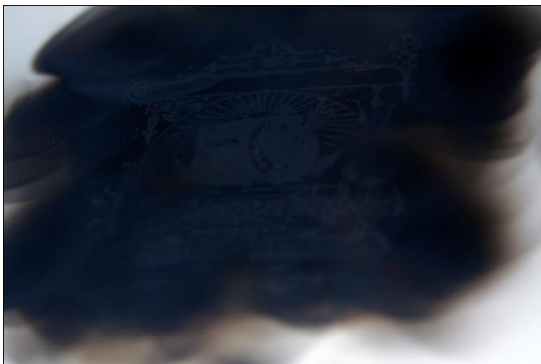
Fold brown piece in half and ink the edges with the Coffee Bean inkpad, ink the edges of the green piece and the smaller brown mat of card as well.



Stamp the Photo studio image onto the larger white card using the versamark stamp pad. Stamp the Change text onto the smaller white piece of white card using the versamark inkpad.



Light the candle and hold each of the white pieces of card over the flame so that it barely touches the flame. Very quickly the flame will begin to soot up the card. Move the piece of card around until the surface is coated in soot. Put aside to cool.



The soot will remain glued to the areas stamped with the Versamark stamp pad. Using either a tissue rolled into a ball or a cotton wool ball, dab gently over the surface until all excess soot has been removed. Spray with a coat of the Matt surface sealer and set aside to dry thoroughly.



Ink the edges of both pieces of soot stamped card then adhere the photo stamped piece to the small brown mat piece.



Adhere the matted piece to the front left of the green card. Attach ribbon to the opposite side.



Attach Text stamped piece using foam dots to other side, half on the ribbon. Tie a piece of the ribbon to one of the clips and slide onto the side of the text piece.



Finally attach whole piece to the front of the brown card.