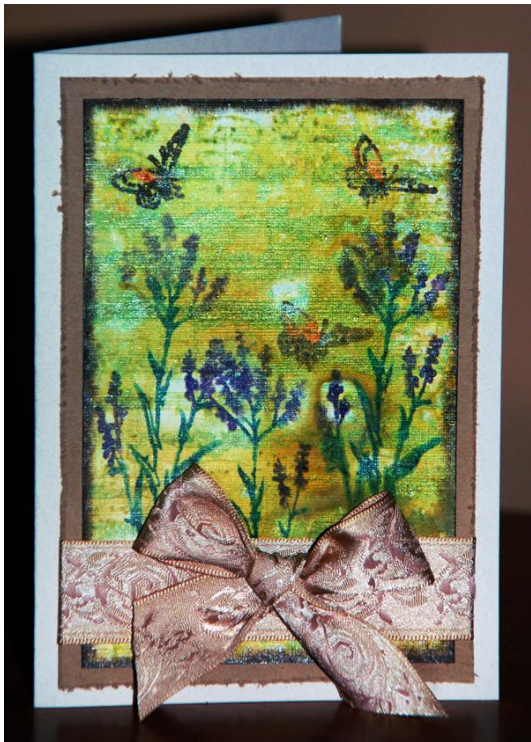


Lavender Card



Required

Bazzill Card – Tanner; white; Walnut Cream

Ranger Tonic Distresser

Prima Clear Stamps – Songbird

Ranger Distress ink – Crushed Olive; Walnut Stain

Ranger Mini Misters

Smooch – Green Apple; Pumpkin; Molasses

Marvy Le Plume Markers – 3 Green; 79 grape

Embroidered Satin – Champagne

Instructions

Cut white card to 3 ¼ inches by 5 inches; Tanner to 3 ¾ inches by 5 ½ inches and Walnut Creme to 8 ½ inches by 6 inches. Fold the Walnut Creme in half to form card base.

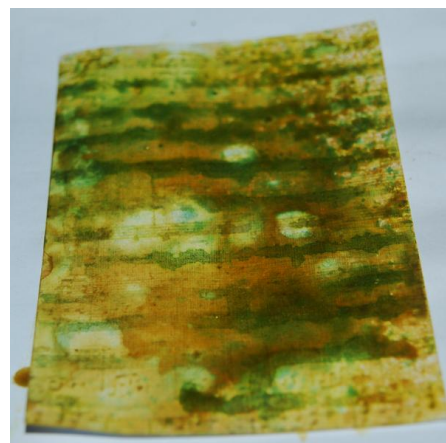
Mix some of the Green apple smooch with water in a mini mister. Ink the Music stamp from set with Crushed Olive ink pad. Spray with the mix you just created and stamp down on



the white card. Restamp with some plain ink stampings to create a fuller effect.

Mix some Molasses Smooch with water in one of the mini misters. Spray card with water mist then the green smooch mixture and Brown Smooch mixture. Put aside and leave to dry thoroughly.

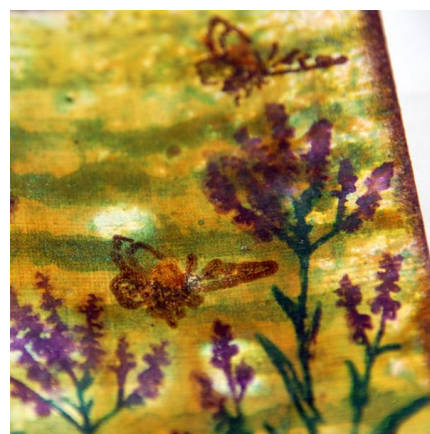
Ink edges with the Walnut stain ink pad.



Using the Lavender type stamp from the set; hand colour the stamp with the markers. Spritz with water then stamp down onto your card. Repeat as desired to cover the width of your card. Put aside to dry.



Stamp three of the butterfly images using Walnut Stain ink. Colour with a touch of the Pumpkin Smooch on the wings.



Use the edging tool to distress the edges of the Tanner card. Attach the decorated card from the earlier steps to the top of this.



Attach ribbon to front of card and then attach whole piece to the front of the card base. Create a ribbon bow and attach to centre of ribbon strip.

